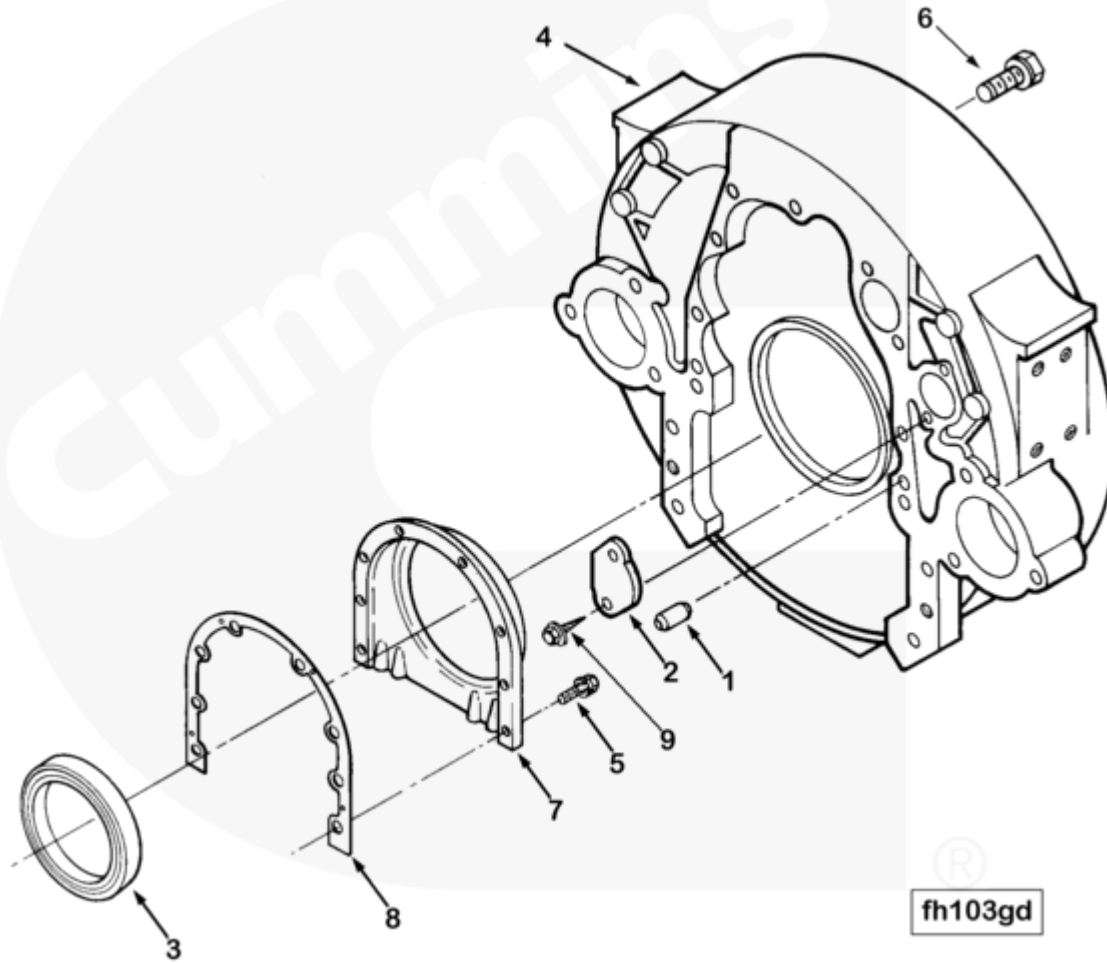




Parts Catalog - Option Detail

Electronic Parts Catalog - Option Detail				
Option	Group	Graphic	Film Card	Date
FH11057	16.01	fh103gd	FF	17-NOV-96
Engines	G855, G855 CM558, GTA855 CM558 (CM2358) G101, N14 CELECT, N14 CELECT PLUS, N14 MECHANICAL, NH/NT 855, QSM11 CM876 M101, QSM11 CM876 M102M, QSN14 CM876 N103, QSN14 CM876 N105, QSNT14 CM876 N102			

©Cummins Inc



[SMALL](#) | [MEDIUM](#) | [LARGE](#)

Cart	Ref No	Part Number	Part Description	Required	Remarks
View My Cart					
		FH11057	Flywheel Housing		
					Flywheel Housing
					SAE #1 dry type closed Cast

					Iron Flywheel Housing with
					both high and low mounting
					pads machined. Starter bore
					machined on exhaust side
					only, No. 2 quadrant. Has
					provision for magnetic
					pick-up.
<input type="checkbox"/>	1	60408	Pin Dowel	2	
<input type="checkbox"/>	2	70657	Access Hole Cover	1	
<input type="checkbox"/>	3	211253	Oil Seal	1	Serviced as 3006737
<input type="checkbox"/>	4	3005557	Flywheel Housing	1	
<input type="checkbox"/>	5	3010594	Captive Washer Cap Screw	8	3/8 - 24 x 1 1/2 Inch
<input type="checkbox"/>	6	3048351	Captive Washer Cap Screw	9	5/8 - 18 x 1 1/2 Inch
<input type="checkbox"/>	7	3049018	Rear Cover	1	
<input type="checkbox"/>	8	3067616	Rear Cover Gasket	1	
<input type="checkbox"/>	9	3077771	Self Tapping Metal Screw	2	